



“We are Committed”
Safety, Environment, Community



More than **15** Years of Experience.
Proven Projects Nationwide.
Continues After Sales Services.



EMIR BINA SDN. BHD. (1050178-M)
403, A, Blok 1,
Laman Seri Business Park,
Persiaran Sukan, Seksyen 13,
40100 Shah Alam,
Selangor Darul Ehsan, Malaysia.

T +603.5524.4467
+603.5524.4468
F +603.5524.4463
E emirbinagroup@gmail.com

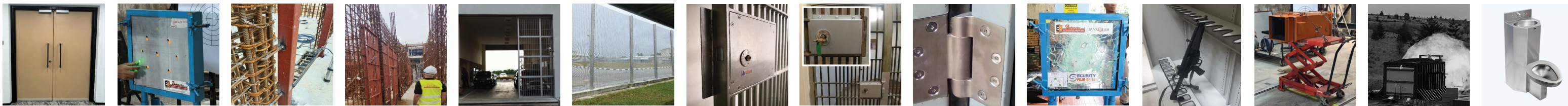


@safety2uglobal
www.emirbina.com.my
+6019.335.7862

www.**Safety2u**.com.my ©
Your Trusted Contractor & Security Partner
Consultant . Contractor . Engineering . Electrical . Steelworks . Supplies



www.emirbina.com.my



PARTNERING WITH INDUSTRY LEADERS TO DELIVER QUALITY YOU CAN RELY ON

	<p>Ballistic Door . Metal Solid Door . Strong Door . Vault Door . Industrial Door . Prison Door . Bulletproof Door . Anti-Blast Door . Customized Security Door.</p>		<p>Speed, Routine & Preventive Maintenance . Repair . Rectification for ELV & Mechanical Door Locks . Buildings & Facilities . Case Study & Report.</p>
	<p>Detention Lockup Grille Door . Security Grille Panel . Security Grille Window Panel . Parameter Anti-Climb . Security Fence . Mesh & Barb Wire . Gate Operator . Road Blocker . Barriers.</p>		<p>Anti-Vandal Sanitary Ware & System . Intelligent Water Management System.</p>
	<p>Mechanical, Electrical Locks & Mounting Box for: Detention . Custodial . Prison Institutional . Police Lockup. (Southern Folger: Southern Steel . Folger Adam . RR Brink)</p>		<p>Computer Numerical Control (CNC) Machines for: Mild Steel, Stainless Steel Parts used in Heavy Machinery, Aviation, Marine, Oil & Gas Industries.</p>
	<p>Anti-Bandit Film . Anti-Bandit Glass . One Way Mirror . Crime Prevention Glass . Bulletproof Glass . Anti-Blast Glass . Security Polycarbonate . Security Film.</p>		<p>Keyless System . High Profile Key Cylinder . Ironmongery . Interior Design & Furniture Works . Architectural Works . Construction.</p>
	<p>Safety Box Burglary Resistant . Weapon & Ammunition Cabinet . Weapon Rack . Hazardous Storage . Anti-Blast Storage . Weapon Ammunition Maintenance Table . Key Management System.</p>		<p>Wire & Wireless Anti-Vandal CCTV . Building & Traffic Control . Face Recognition . Smart Monitoring . Card Access.</p>
	<p>Security Weapon & Ammunition Counter . Ballistic Panel . Soundproof Panel . Padded Cell Panel . Acoustic Panel . Strong Room . Panic Room . Bullet Rubber Catcher . Bullet Clearing Chamber & Booth . Bulletproof Vest & Helmet . Armory Vehicles.</p>		<p>We are your trusted partner for property care. From plumbing, civil works, electrical work, painting to security and cleaning services, our skilled professionals handle all your repair and maintenance needs reliably.</p>

LICENSES / APPROVALS



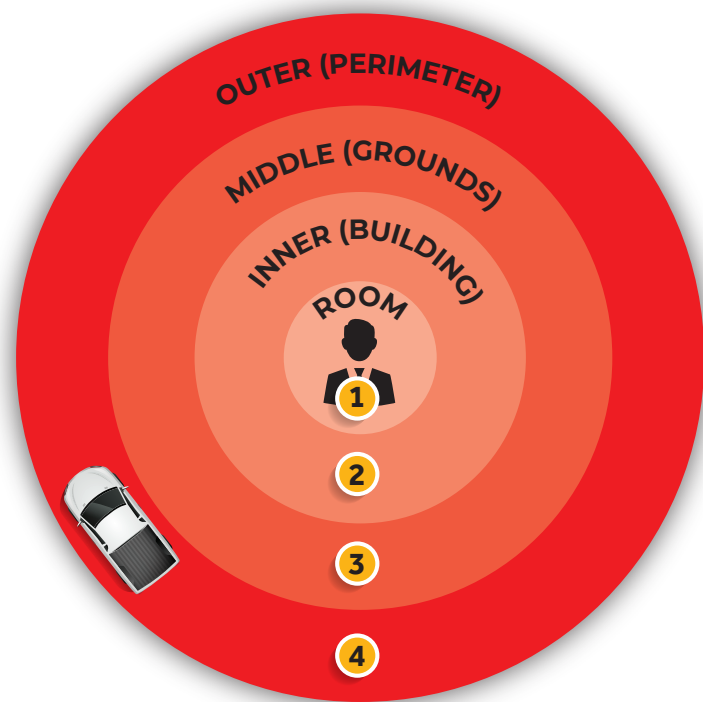
WE PROVIDE

Leveraging our diverse expertise in security and safety, we deliver comprehensive services tailored to each project's approach, ensuring they meet the required standards.

Planning & Consultation	Supply & Delivery	Installation	Design & Build	Testing & Commissioning	Service & Maintenance

OUR LEVEL AND AREAS OF SECURITY

- ASSETS**
BODY PROTECTION (Life)
Items such as ballistic body armor, hearing protection, communication kits, headsets, light sources, surveillance and lab equipment, night vision goggles, equipment and storage cases, and safety gear. Ammunition for applications ranging from sport shooting and self-defense to tactical and law enforcement use.
- INNER (BUILDING & ROOMS)**
PRIMARY CRITICAL AREAS
High-level security zones such as executive offices, secure departmental areas, IT server rooms, conference and meeting rooms, and secure storage or documentation rooms.
- MIDDLE (GROUNDS)**
SECONDARY CRITICAL AREAS
Medium-level security areas such as general departmental offices, corridors, elevators, and reception areas.
- OUTDOOR & VEHICLES**
PERIMETER CRITICAL AREAS
Publicly accessible zones of an office building, the office compound, public parks, and car parks. VEHICLE ARMORING for protection against ballistic attacks and other threats.



Safety2u .com.my
Your Trusted Contractor & Security Partner
Consultant . Contractor . Engineering . Electrical . Steelworks . Supplies

PROJECT PORTFOLIO

Over 500 Projects	GOVERNMENT & LAW ENFORCEMENT	DEFENCE & TRANSPORT	HEALTHCARE & EDUCATION	CORPORATE & COMMERCIAL	FINANCIAL REGULATORY & AGENCIES	PRIVATE & RESIDENTIAL	DIPLOMATIC & OVERSEAS
	Home Affairs (KDN). Police (PDRM). Immigration (JIM). Courts (BHEUU). Prisons (JPM). Coast Guard (APMM). Eastern Sabah Command (ESCOMM). Anti-Drug Agencies (AADK). Customs (KASTAM). Anti-Bribery Agencies (SPRM)	MILITARY CAMPS & BASES. ARMY. NAVY. AIR FORCE. AIRPORTS. COMMERCIAL TERMINALS.	HOSPITALS. CLINICS. MEDICAL CENTRES. UNIVERSITIES. SCHOOLS. LIBRARIES. MOSQUES.	CORPORATE HEADQUARTERS. OFFICE BUILDINGS. SHOPPING MALLS. INDUSTRIAL BUILDINGS. INTEGRATED DATA CENTRES.	CENTRAL BANKS. FINANCIAL INSTITUTIONS. COLLATERAL LOANS PROVIDER BUILDINGS. JEWELLERY SHOPS	HERITAGE PROPERTIES. PRIVATE ESTATES. GATED COMMUNITIES. HIGH-NET-WORTH PROPERTIES.	EMBASSIES. CONSULATES. INTERNATIONAL COMPOUNDS. ETC